

## FLEXLINE



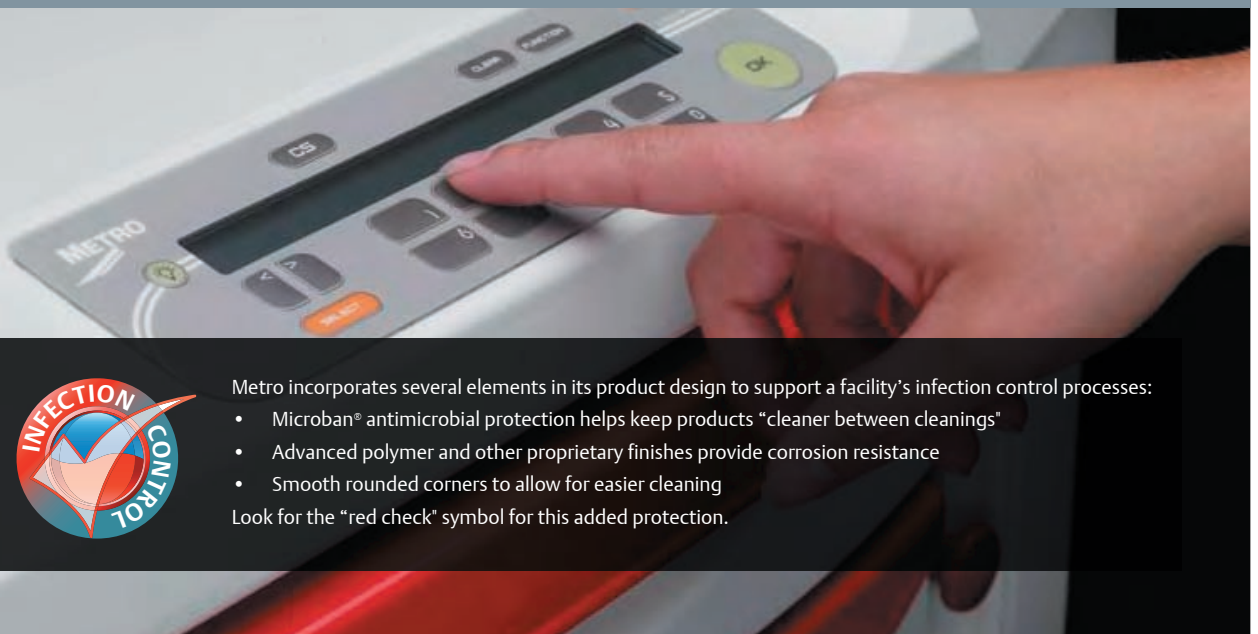
**FLEXLINE**



# Flexline



Flexline is constructed of advanced polymers, designed with rounded corners and infused with Microban antimicrobial product protection for a clean, durable solution that withstands the rigors of a healthcare environment.



Metro incorporates several elements in its product design to support a facility's infection control processes:

- Microban® antimicrobial protection helps keep products "cleaner between cleanings"
- Advanced polymer and other proprietary finishes provide corrosion resistance
- Smooth rounded corners to allow for easier cleaning

Look for the "red check" symbol for this added protection.

# Standardized options. Configured by you.



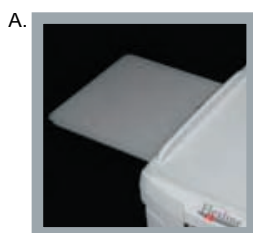
### DRAWER PULL COLORS



### CODE BLUE DRAWER PULL COLOR



### PEDIATRIC COLOR KIT



> Advanced polymer construction, rounded corners and Microban antimicrobial product protection help maintain a cleaner cart to improve infection control.

A. Pull out side shelf provides additional work space.

B. Pull out interior shelf accommodates equipment or used as a seated writing surface.

C. Laptop arm and keyboard shelf accommodate technology needs.

D. Full extension drawers have self-closing ball bearing slides to provide easy access to medications and supplies. (Drawer depths: 3", 6", 9", 12")

E. Auto Lock Keyless Entry Touch Pads, Card Readers, Data Manager Software, Key Locks and Passive Locks are available for every security need.

F. Spacious work surface provides a smooth writing surface or ample space for prep work.

G. 5" (127mm) polymer caster, 2 directional and 2 brake casters provide control and stability.

H. Overbridge Storage creates additional space and clears clutter without expanding the cart footprint.

I. Recessed side storage holds tilt out bins, wastebaskets, lockable sharps containers, O2 tanks, glove boxes, and suction pump shelves.

J. Strapless defibrillator platform adjusts to fit various defibrillators and can be moved away from work surface and towards the patient.

K. The backboard can be mounted to the front or back of the cart.

L. Passive security seals for the entire cart or individual drawers. 13

## FLEXLINE

Packages include carts and accessories.



Code Response Package **FLCRP1**



Code Response Package **FLCRP2**



Code Response Package **FLCRP3**



Code Response Package **FLCRP4**



Code Response Pediatrics **FLPED1**



Anesthesia Package **FLANES1**



Isolation Package **FLISO1**



Isolation Pediatrics **FLISO3**



Bedside Package **FLBED**

## FLEXLINE

Packages include carts and accessories.



Treatment Package **FLTMENT1**



Treatment Package **FLTMENT2**



Procedure Package **FLPROC1**



Procedure Package **FLPROC2**



Cast Package **FLCAST**



Endoscopic Package **FLENDO**



Dressing Package **FLDRS**



Phlebotomy Package **FLIV**



Critical Care Package **FLCCU1**

## FLEXLINE



Med/Surge Package **FLMDSRG**



Central Line Package **FLCLINE**



Airway Package **FLAIR**



Nurse Server Package **FLNURSE**



### Optional Technology Features include:

- Automatic electronic locking systems
- Articulating arms to hold laptops, tablets, and LCD screens
- Retractable keyboard tray
- Internal/external wire management protects cords from snags and damage
- Hospital grade outlet strips
- Tech trays for battery or computer storage

Many applications in healthcare today are utilizing a form of technology. Applications that are integrating technology into their process need a cart that can accommodate those components. The needs can range from a simple hospital grade strip and articulating laptop arm, to a fully integrated solution with onboard power and a full complement of technology accessories.

### Computer Package **FLCOM-LT**

(Laptop, mouse, and power supply not included.)



## FLEXLINE

### Flexline Application-Specific Carts

Carts shown on the previous pages are configured with the components and accessories listed here.

#### Accessories

Cat. No.	Description	FLCRP1	FLCRP2	FLCRP3	FLCRP4	FLPED1	FLAMES1	FLIS01	FLIS02	FLIS03	FLBED	FLTMENT1	FLTMENT2	FLPROC1	FLPROC2	FLCOW-LIT	FLCAST	FLENDO	FLDRS	FLIV	FLCCU1	FLCCU2	FLMDSRG	FLCLINE	FLAIR	FLNURSE
FL113	3" Drawer Divider Kit						1		1				2	3		1		2	2			1		2	X	
FL116	6/9" Drawer Divider Kit						2		3				2	1		1		1	1	2		1		1	1	
FL131	Ampule Insert & 12 Divider For 3" Drawer Tray																			1						
FL151	3" Drawer Divider Tray With Dividers	2	3	2	3																					
FL159	6" Drawer Divider Tray With Dividers	1	1	2	2																					
FL211	Side Bin (1)- Locking	2		3	4																					
FL212	Side Bin (1)- Non Locking						4	2						3	3	3	4	3	4		4	3	3	2	3	2
FL221	Waste Basket 28 Quart & Holder						X										X	X					X			
FL234	O2 Tank Holder - Low	X	X																							
FL235	O2 Tank Holder - High				X	X																				
FL237	Glove Box Holder - Triple								X																	
FL251	Lockable Sharps Container		X				X			X				X					X			X	X			
FL302	Cord Manager		X	X	X									X				X								
FL303	Defibrillator Strap Kit		X																							
LEC304	Adjustable Defibrillator Tray	X		X	X																					
FL305	Hospital Grade 6-Outlet Strip and Holder	X	X	X	X									X				X				X				
LEC306	Suction Pump Shelf			X	X	X																				
LEC308	Backboard with Front Assembly kit	X																								
LEC309	Backboard with Back Assembly kit		X	X	X	X																				
FL310	Articulating arm - Laptop															X										
FL318	Articulating arm - Monitor																	X								
FL313	Peel Pouch/Catheter Holder						X																			
FL314	Pull Out Side Shelf			X	X	X				X				X	X	X						X	X			
FL315	2HK IV pole With Cart Mount	X	X	X	X	X		X	X											X						
FL317	4HK IV pole With Cart Mount																									
LEC320	Plastic Security Seals 100PK	X	X	X	X	X																				
FL402	Individual Drawer Seal Lock Bar - Flex 42" Cart				X																					
FL403	Individual Drawer Seal Lock Bar - Flex 45" Cart					X																				
FL411	Auto Lock Keyless Entry Touch Pad											X							X						X	
FL420	Lock Alert VI - Auto Lock						X							X	X	X		X			X		X	X		
FL510	Over Bridge With 2 Hanger Rails						X							X												
FL515	Over Bridge With Top Shelf & Hanger Rail														X						X	X	X			
FL520	Over Bridge With 2 Shelves															X										
FL544	Tilt Bin 4 For Over Bridge						X																			
FL546	Tilt Bin 6 For Over Bridge						X														X					
FL566	4HK IV Pole With Universal Clamp - For Over Bridge																									
FL581	Half-Size Utility Bin													X												
FL583	Label/Tape Dispenser													X												
FL585	Wire Supply Basket													X								X				
FL586	Utility Bin With Cover													X								X				

#### Carts

Cat. No.	Description	FL-CB	FL-CB	FL-CB	FL-CB	FL-PED9	FL-SB	FL-YL	FL-YL	FL-YL	FL-VL	FL-GR	FL-SB	FL-SB	FL-TPE	FL-SB	FL-OR	FL-GN	FL-SB	FL-RD	FL-RD	FL-RD	FL-GN	FL-DTE	FL-SB	FL-VL
FL21P	36"(914mm) Cart-Passive Lock	X						X																		X
FL24P	39"(991mm) Cart-Passive Lock		X																							
FL27P	42"(1067mm) Cart-Passive Lock			X																	X					
FL30P	45"(1143mm) Cart-Passive Lock				X	X											X									
FLN24P	39"(991mm) Narrow Cart-Passive Lock								X																	
FLN30P	45"(1143mm) Narrow Cart-Passive Lock									X																
FL24K	39"(991mm) Cart-Key Lock													X						X						
FL27K	42"(1067mm) Cart-Key Lock														X	X		X			X	X	X		X	
FL30K	45"(1143mm) Cart-Key Lock						X														X		X			
FLN21K	36"(914mm) Narrow Cart-Key Lock										X	X														
FLN24K	39"(991mm) Narrow Cart-Key Lock													X												
FLN27K	42"(1067mm) Narrow Cart-Key Lock													X												
FLN30K	45"(1143mm) Narrow Cart-Key Lock																									
FL-	Drawer Pull Color																									

#### Drawers

Cat. No.	Description	FL-CB	FL-CB	FL-CB	FL-CB	FL-PED9	FL-SB	FL-YL	FL-YL	FL-YL	FL-VL	FL-GR	FL-SB	FL-SB	FL-TPE	FL-SB	FL-OR	FL-GN	FL-SB	FL-RD	FL-RD	FL-RD	FL-GN	FL-DTE	FL-SB	FL-VL
FL101	3" (76mm) Pull Out Shelf														1							1				
FL102	Keyboard Tray															1										
FL103L	3" (76mm) Narcotics Box/Individual Locking Drawer						1																			
FL103	3" (76mm) Drawer	2	3	4	3	8	2	1	1	2	1	2	2	3	1	3	2	3	3	3	3	1	2	3	3	2
FL106	6" (152mm) Drawer	1	1	1	2	1	2	2	2		1	3	2	1	0	2	2			1	2	1	2	2		1
FL109	9" (229mm) Drawer	1	1	1	1		1	1	1	3	1		1		2	1	1	1	2	1	1	1	1	1	1	2
FL112	12" (305mm) Drawer													1												

## FLEXLINE

### Basic Carts with Drawers

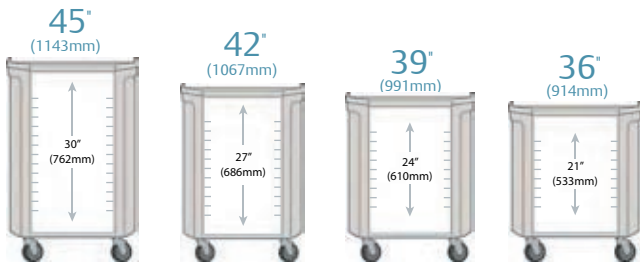


**FLNK2210**

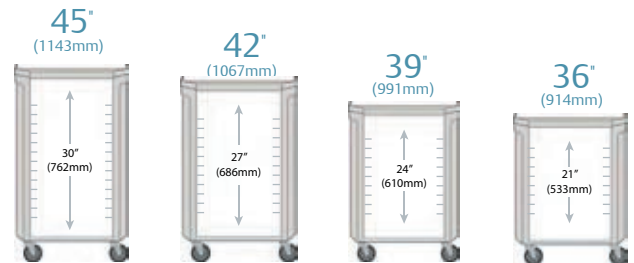
Cart	Drawer Configuration	Lock	Drawer Pull Color	Cat. No.
36" (914mm)H Standard	2 - 3" (76mm)	Key Lock	Violet	<b>FLK21100</b>
	1 - 6" (152mm)			
	1 - 9" (229mm)			
36" (914mm)H Narrow	3 - 3" (76mm)	Key Lock	Pink	<b>FLNK3200</b>
	2 - 6" (152mm)			
39" (991mm)H Standard	3 - 3" (76mm)	Passive Lock	Red	<b>FLP31100</b>
	1 - 6" (152mm)			
	1 - 9" (229mm)			
42" (1067mm)H Narrow	2 - 3" (76mm)	Key Lock	Slate Blue	<b>FLNK22100</b>
	2 - 6" (152mm)			
	1 - 9" (229mm)			
42" (1067mm)H Standard	4 - 3" (76mm)	Passive Lock	Slate Blue	<b>FLP41100</b>
	1 - 6" (152mm)			
	1 - 9" (229mm)			
42" (1067mm)H Narrow	3 - 9" (229mm)	Key Lock	Dark Taupe	<b>FLNK00300</b>
45" (1143mm)H Standard	2 - 3" (76mm)	Passive Lock	Orange	<b>FLP22010</b>
	2 - 6" (152mm)			
	1 - 12" (305mm)			
45" (1143mm)H Narrow	1 - 3" (76mm)	Passive Lock	Green	<b>FLNP13100</b>
	3 - 6" (152mm)			
	1 - 9" (229mm)			

### Build-a-Cart

#### STANDARD CART



#### NARROW CART



### Cart Bodies without Drawers

Width/Length/Height in. (mm)	Drawer Space in. (mm)	Lock	Width	Cat. No.
22 <sup>3</sup> / <sub>8</sub> (568mm) x32 <sup>1</sup> / <sub>4</sub> (819mm) x34 <sup>7</sup> / <sub>8</sub> (886mm)	21" (533mm)	Passive Lock	Standard	<b>FL21P</b>
22 <sup>3</sup> / <sub>8</sub> (568mm) x32 <sup>1</sup> / <sub>4</sub> (819mm) x38 <sup>1</sup> / <sub>8</sub> (969mm)	24" (610mm)	Passive Lock	Standard	<b>FL24P</b>
22 <sup>3</sup> / <sub>8</sub> (568mm) x32 <sup>1</sup> / <sub>4</sub> (819mm) x41 <sup>1</sup> / <sub>2</sub> (1054mm)	27" (686mm)	Passive Lock	Standard	<b>FL27P</b>
22 <sup>3</sup> / <sub>8</sub> (568mm) x32 <sup>1</sup> / <sub>4</sub> (819mm) x44 <sup>7</sup> / <sub>8</sub> (1140mm)	30" (762mm)	Passive Lock	Standard	<b>FL30P</b>
22 <sup>3</sup> / <sub>8</sub> (568mm) x28 <sup>7</sup> / <sub>8</sub> (734mm) x34 <sup>7</sup> / <sub>8</sub> (886mm)	21" (533mm)	Passive Lock	Narrow	<b>FLN21P</b>
22 <sup>3</sup> / <sub>8</sub> (568mm) x28 <sup>7</sup> / <sub>8</sub> (734mm) x38 <sup>1</sup> / <sub>8</sub> (969mm)	24" (610mm)	Passive Lock	Narrow	<b>FLN24P</b>
22 <sup>3</sup> / <sub>8</sub> (568mm) x28 <sup>7</sup> / <sub>8</sub> (734mm) x41 <sup>1</sup> / <sub>2</sub> (1054mm)	27" (686mm)	Passive Lock	Narrow	<b>FLN27P</b>
22 <sup>3</sup> / <sub>8</sub> (568mm) x28 <sup>7</sup> / <sub>8</sub> (734mm) x44 <sup>7</sup> / <sub>8</sub> (1140mm)	30" (762mm)	Passive Lock	Narrow	<b>FLN30P</b>
22 <sup>3</sup> / <sub>8</sub> (568mm) x32 <sup>1</sup> / <sub>4</sub> (819mm) x34 <sup>7</sup> / <sub>8</sub> (886mm)	21" (533mm)	Key Lock	Standard	<b>FL21K</b>
22 <sup>3</sup> / <sub>8</sub> (568mm) x32 <sup>1</sup> / <sub>4</sub> (819mm) x38 <sup>1</sup> / <sub>8</sub> (969mm)	24" (610mm)	Key Lock	Standard	<b>FL24K</b>
22 <sup>3</sup> / <sub>8</sub> (568mm) x32 <sup>1</sup> / <sub>4</sub> (819mm) x41 <sup>1</sup> / <sub>2</sub> (1054mm)	27" (686mm)	Key Lock	Standard	<b>FL27K</b>
22 <sup>3</sup> / <sub>8</sub> (568mm) x32 <sup>1</sup> / <sub>4</sub> (819mm) x44 <sup>7</sup> / <sub>8</sub> (1140mm)	30" (762mm)	Key Lock	Standard	<b>FL30K</b>
22 <sup>3</sup> / <sub>8</sub> (568mm) x28 <sup>7</sup> / <sub>8</sub> (734mm) x34 <sup>7</sup> / <sub>8</sub> (886mm)	21" (533mm)	Key Lock	Narrow	<b>FLN21K</b>
22 <sup>3</sup> / <sub>8</sub> (568mm) x28 <sup>7</sup> / <sub>8</sub> (734mm) x38 <sup>1</sup> / <sub>8</sub> (969mm)	24" (610mm)	Key Lock	Narrow	<b>FLN24K</b>
22 <sup>3</sup> / <sub>8</sub> (568mm) x28 <sup>7</sup> / <sub>8</sub> (734mm) x41 <sup>1</sup> / <sub>2</sub> (1054mm)	27" (686mm)	Key Lock	Narrow	<b>FLN27K</b>
22 <sup>3</sup> / <sub>8</sub> (568mm) x28 <sup>7</sup> / <sub>8</sub> (734mm) x44 <sup>7</sup> / <sub>8</sub> (1140mm)	30" (762mm)	Key Lock	Narrow	<b>FLN30K</b>

## FLEXLINE



FL420

### Additional Security

Description	Cat. No.
Individual Drawer Seal Lock Bar - 36" (914mm) Cart	<b>FL400</b>
Individual Drawer Seal Lock Bar - 39" (991mm) Cart	<b>FL401</b>
Individual Drawer Seal Lock Bar - 42" (1067mm) Cart	<b>FL402</b>
Individual Drawer Seal Lock Bar - 45" (1143mm) Cart	<b>FL403</b>
Basic Keyless Entry Touch Pad with 10 year battery	<b>FL410*</b>
Basic Keyless Entry Touch Pad with Auto Lock, Rechargeable	<b>FL411*</b>
Touch Pad Charger Adapter Kit - 90-264 VAC 47-63 Hz	<b>FL419</b>
Touchpad with LCD Screen, Auto Lock, USB Port (Card Reader Upgradable)	<b>FL420*</b>
Software Manager for FL420	<b>FL421</b>
Proximity Card Reader for FL420	<b>FL430**</b>
Bar Code Card Reader for FL420	<b>FL431**</b>
Magnetic Card Reader for FL420	<b>FL432**</b>

\*FL410, FL411, FL420 can only be ordered with a key locking cart.  
 \*\*Readers may not be compatible with all cards. Check with your Metro Representative.

### Drawer, Shelf and Keyboard Shelf Drawer pulls must be ordered with each drawer.

Description	Cat. No.
Lockable Drawer Cover	<b>FL100</b>
3" (76mm) Pull Out Shelf	<b>FL101</b>
Keyboard Tray	<b>FL102</b>
3" (76mm) Narcotics Box/Individual Locking Drawer	<b>FL103L</b>
3" (76mm) Drawer (no drawer pull)	<b>FL103</b>
6" (152mm) Drawer (no drawer pull)	<b>FL106</b>
9" (229mm) Drawer (no drawer pull)	<b>FL109</b>
12" (305mm) Drawer (no drawer pull)	<b>FL112</b>
Solid Bottom Shelf	<b>FL120</b>
Pediatric Code Response Drawer Kit (8-3", 1-6" Drawers with colored pulls)	<b>FL-PED9**</b>

\*Inside Drawer Dimensions - 20 1/2" (514mm) wide x 17" (432mm) deep.  
 \*\*Can only be ordered with a 45" cart.

### Drawer Pulls Colors Order 1 drawer pull per drawer.

Description	Cat. No.
Drawer Pull - Code Blue	<b>FL-CB</b>
Drawer Pull - Red	<b>FL-RD</b>
Drawer Pull - Orange	<b>FL-OR</b>
Drawer Pull - Green	<b>FL-GR</b>
Drawer Pull - Yellow	<b>FL-YL</b>
Drawer Pull - Slate Blue	<b>FL-SB</b>
Drawer Pull - Violet	<b>FL-VL</b>
Drawer Pull - Pink	<b>FL-PK</b>
Drawer Pull - White	<b>FL-WHT</b>
Drawer Pull - Dark Taupe	<b>FL-TPE</b>



FL400-FL403



FL101

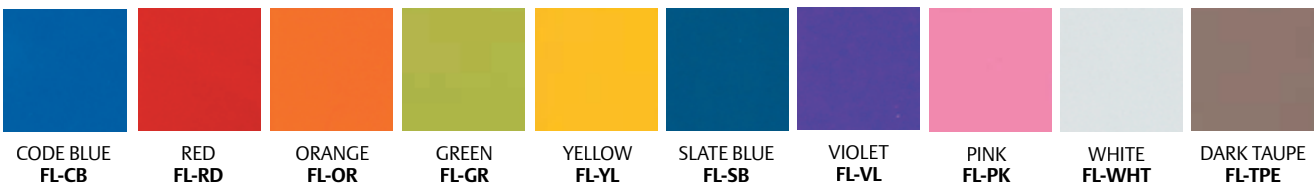


FL102



FL-PED9

### DRAWER PULL COLORS



CODE BLUE  
FL-CB

RED  
FL-RD

ORANGE  
FL-OR

GREEN  
FL-GR

YELLOW  
FL-YL

SLATE BLUE  
FL-SB

VIOLET  
FL-VL

PINK  
FL-PK

WHITE  
FL-WHT

DARK TAUPE  
FL-TPE

## FLEXLINE



FL151



FL159



FL190 (Label not included)



FL237



FL235



FL236, FL221



FL212

### Drawer Accessories

Description	Cat. No.
3" (76mm)Drawer Divider Kit	FL113
Short Divider For FL103 or LEC103 5 PK	FL114
Long Divider Rails For FL103 or LEC103 2 PK	FL115
6/9" (152/229mm) Drawer Divider Kit	FL116
Short Divider For FL106 or LEC106 5 PK	FL117
Long Divider Rails For FL106 or LEC106 2 PK	FL118
Ampule Insert & 12 Divider For 3" (76mm) Drawer Tray	FL131
Divider For FL131, 12 PK	FL132
3" (76mm)Egg Crate Style Drawer Divider Kit	FL141
6" (152mm)Egg Crate Style Drawer Divider Kit	FL142
3" (76mm) Drawer Divider Tray With Dividers	FL151
Lid For 6"(152mm) Drawer Tray	FL158
6" (152mm) Drawer Divider Tray With Dividers	FL159
Long Divider For FL151 or LEC143 2 PK	FL163
Short Divider For FL151 or LEC143 10PK	FL164
Long Divider For FL159 2 PK	FL166
Short Divider For FL159 3 PK	FL167
Security Bags For 3" (76mm)Tray and 6" (152mm)Tray 20PK	FL183
Label Holder Set of 10	FL190

### Side/Recessed Storage Accessories

Description	Cat. No.
Side Bin (1)- Locking	FL211*
Side Bin (1)- Non Locking	FL212
Waste Basket 28 Quart & Holder	FL221
Waste Basket 28 Quart	FL222
O2 Tank Holder - 45"(1140mm)H Cart - 5 1/2" Diameter Tank	FL235-5**
O2 Tank Holder - 45"(1140mm)H Cart - 4" Diameter Tank	FL235**
Glove Box Holder - Single	FL236
Glove Box Holder - Triple	FL237
Scope Cabinet, 2 - hook	FL245
Scope Cabinet, 4 - hook	FL246
Sharps Container Bracket - Non Locking	FL250
Lockable Sharps Container	FL251
Replacement Containers for FL251	FL252

\*Locking bins for keylock cart are available on the right. Locking bins for the passive lock cart are available on the left.  
 \*\*Please call for tank storage on carts lower than 45" (1143mm)

## FLEXLINE



FL314



LEC304, FL315



FL303

### Cart Accessories

Description	Cat. No.
Rear Accessory Mount Brackets – 1 Pair	FL301
Cord Manager	FL302
Defibrillator Strap Kit	FL303
Adjustable Defibrillator Tray	LEC304
Hospital Grade 6-Outlet Strip and Holder	FL305
Suction Pump Shelf	LEC306
Backboard with Front Assembly Kit	LEC308*
Backboard with Back Assembly Kit	LEC309*
Articulating arm - Laptop	FL310
Articulating arm - Tablet	FL311
Articulating arm - Monitor	FL318
Peel Pouch Container	FL312
Peel Pouch/Catheter Holder	FL313
Pull Out Side Shelf	FL314
2HK IV pole With Cart Mount	FL315
4HK IV pole With Cart Mount	FL317
Plastic Security Seals 100PK	LEC320
Front Mount Backboard Assembly Kit	LEC321*
Back Mount Backboard Assembly Kit	LEC322*
Backboard	LEC323

\*Must be factory installed.



FL310



FL515, FL544

### Over Bridges & Over Bridge Accessories

Description	Cat. No.
Over Bridge With 2 Hanger Rails	FL510
Over Bridge With Top Shelf & Hanger Rail	FL515
Over Bridge With 2 Shelves	FL520
Tilt Bin 3 For Over Bridge - 9½"(241mm)Hx7¾"(197mm)Wx23¾"(600mm)L	FL543
Tilt Bin 4 For Over Bridge - 8¼"(206mm)Hx6¼"(168mm)Wx23¾"(600mm)L	FL544
Tilt Bin 6 For Over Bridge - 4½"(114mm)Hx3¼"(92mm)Wx23¾"(600mm)L	FL546
Hanger Rail	FL550
Over Bridge Bottom Shelf	FL559
Over Bridge Top Shelf	FL560
2HK IV Pole With Universal Clamp - For Over Bridge	FL563
4HK IV Pole With Universal Clamp - For Over Bridge	FL566
Universal Clamp	FL570
Short Utility Hook 4 PK (Holds peel pouches, IV bags, stethoscopes, etc..)	FL571*
4-Hook Rack (Holds forceps and scopes)	FL574
Laryngoscope Blade/Specimen Bag Holder (Holds plastic bag -not included- for safe storage of contaminated items)	FL575*
Chart Holder	FL576
Half-Size Utility Bin - 5½"(140mm)Hx5½"(140mm)Wx5¾"(146mm)L	FL581
Full-Size Utility Bin - 5½"(140mm)Hx5½"(140mm)Wx11¾"(292mm)L	FL582
Label/Tape Dispenser	FL583
Sharps Bracket Container	FL584*
Wire Supply Basket - 5"(127mm)Hx7"(178mm)Wx17"(432mm)L	FL585
Utility Bin With Cover (pack of six)	FL586
Monitor mounts For Over Bridge	FL590

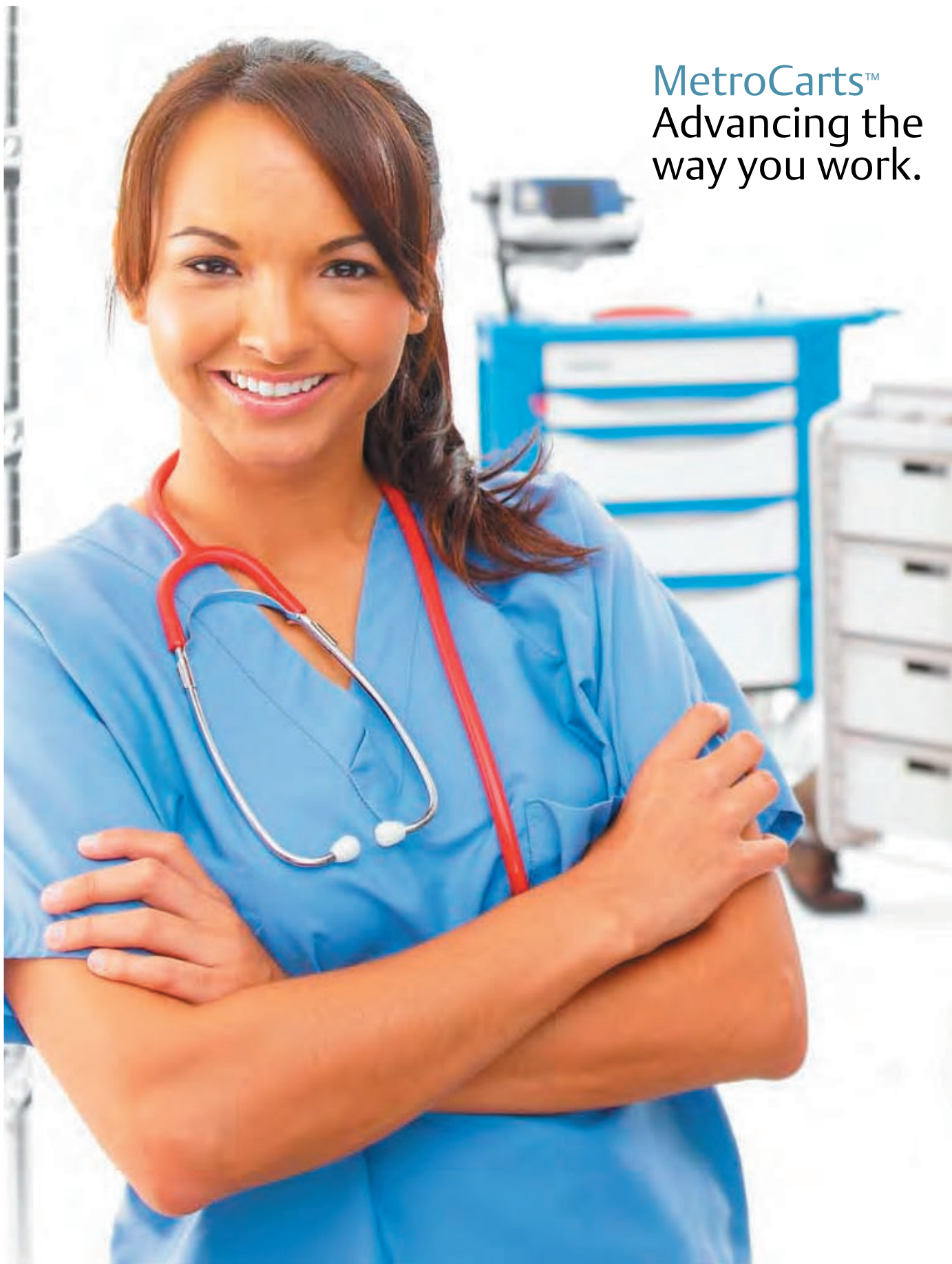
\*Fits on universal clamp in addition to a hanger rail.



FL510, FL546, FL544



FL510, FL583, FL581,  
FL582, FL586



**MetroCarts™**  
Advancing the  
way you work.